

Lecture 1: Characteristics and Examples of Time Series Data

Introduction to Time Series, Fall 2023

Ryan Tibshirani

Related reading: Chapters 1.1–1.2 of Shumway and Stoffer (SS); Chapters 2.3 and 3.2–3.6 of Hyndman and Athanasopoulos (HA).

1 Course stuff

- Instructor: Ryan Tibshirani
- GSI: Alice Cima
- Reader: David Zhang
- Course website: <https://www.stat.berkeley.edu/~ryantibs/timeseries-f23/>
- Everything will be up on the website: lecture notes, homework assignments, syllabus, schedule, links to bCourses, Ed discussion, etc.
- Please email the GSI with any issues first. The Instructor will be looped in only as-needed
- Please call me Ryan, Professor Tibshirani, or Professor Tibs. Please DO NOT call me Professor
- There will be 5 homework assignments, 1 midterm, and 1 final exam. Syllabus gives details on grading breakdown
- The homeworks will be due about every 2 weeks, with spacing for the midterm and the final. Schedule on website gives projected dates
- Probability at the level of Stat 134 or Data 140 is required as a pre-req. Statistics at the level of Stat 133 and 135 is recommend and may be taken concurrently
- We will also assume basic level of fluency in R programming. You will need to have R installed, and it will be very helpful for you to have RStudio installed
- Read the course website or the syllabus for the projected list of topics that we will cover
- Read the syllabus for late policy for homeworks, and collaboration policy
- Do not copy or cheat. It will not end well and dealing with it is really not fun for anyone involved
- Ok, now on to the fun stuff!

2 Time series intro

- What fields do time series data occur in? Economics, social science, epidemiology, medicine, neuroscience, language modeling, ...
 - Economics: stock prices or stock returns over time
 - Social science: birth rates or school acceptance rates over time
 - Epidemiology: Covid-19 cases or Influenza hospitalizations over time
 - Medicine: blood antibody levels over time (IgA, IgG, IgM, ...)
 - Neuroscience: brain-wave patterns over time, under different conditions

- Language modeling: word or token distributions over time
- What distinguishes time series from traditional (batch) data problems?

The data are not i.i.d. (independent and identically distributed). There is correlation induced by the fact that we are making observations over time.
- Ignoring these correlations is going to be problematic. Enter time series analysis, models, and forecasts
- Worth mentioning at the outset that there are two view in classical time series analysis: *time domain* and *frequency domain* (also called *spectral*) approaches.
 - Time domain: language/tools for studying lagged relationships—e.g., what happened yesterday will influence today and tomorrow
 - Frequency domain: language/tools for studying study seasonality and cycles
- These are not mutually exclusive. We will mostly focus on the former (time domain approaches), but will briefly introduce the latter (frequency domain approaches) a bit later in the course
- We will also use a significant chunk of the course to emphasize the predictive perspective: forecasting, practical considerations therein, and important related topics like calibration and ensembling

3 Time series examples

- We'll step through the following examples, in Figures 1–7, and discuss each, including why the data cannot really be i.i.d.

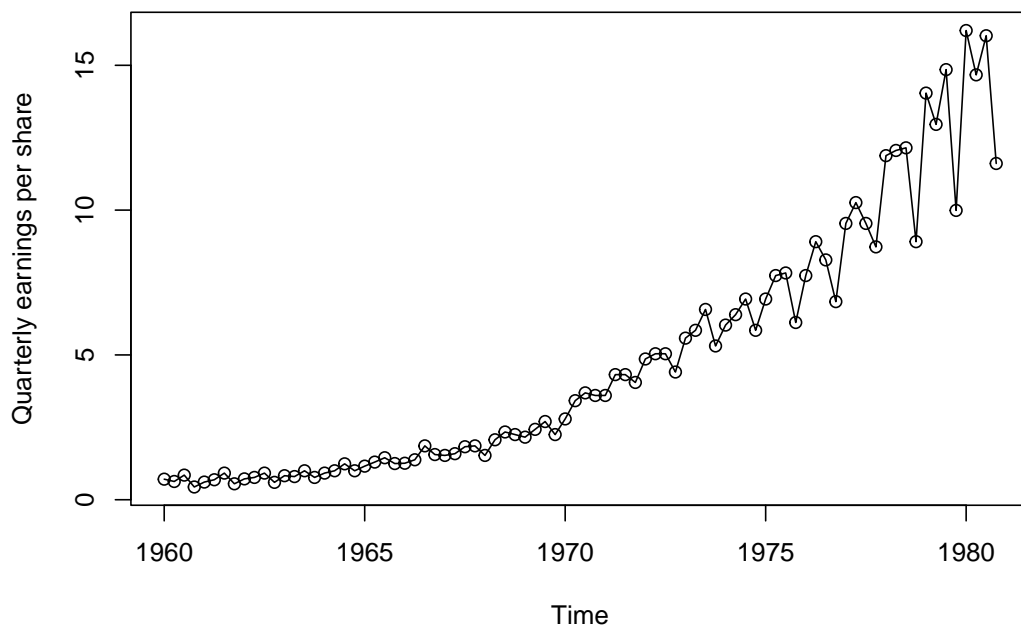


Figure 1: *Johnson & Johnson quarterly earnings per share (from SS).*

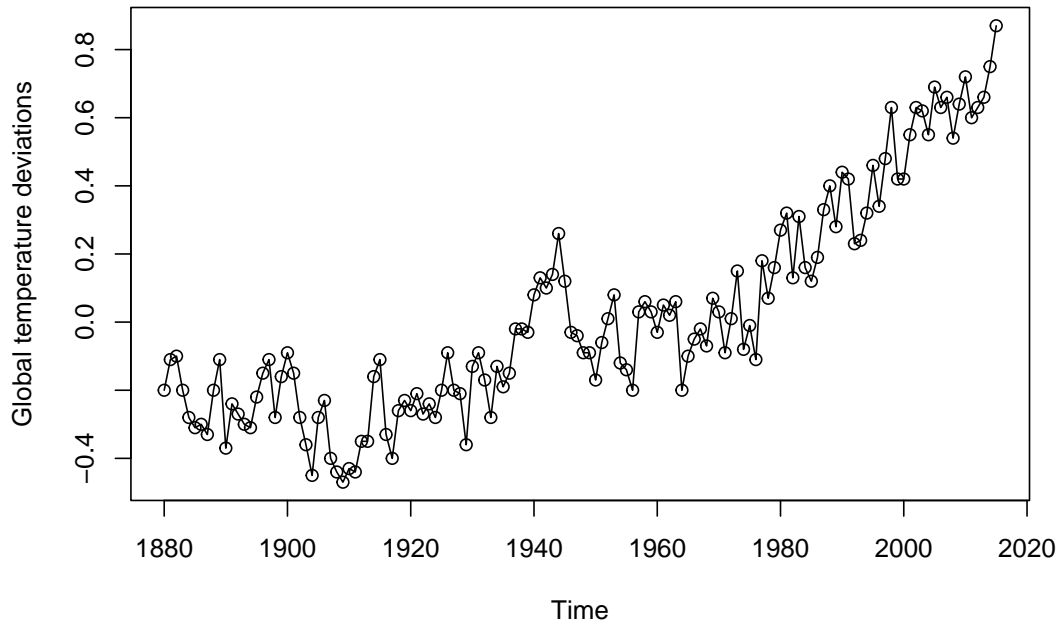


Figure 2: *Yearly average global temperature deviations from the 1951–1980 average (from SS).*

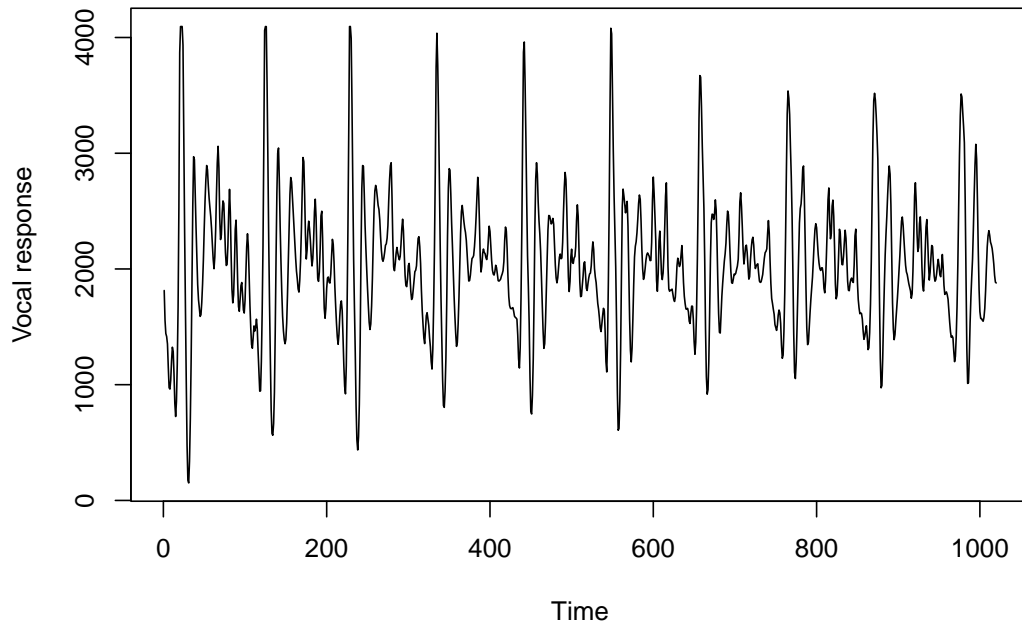


Figure 3: *Vocal response data measured from the syllable “aaa ... hhh” (from SS).*

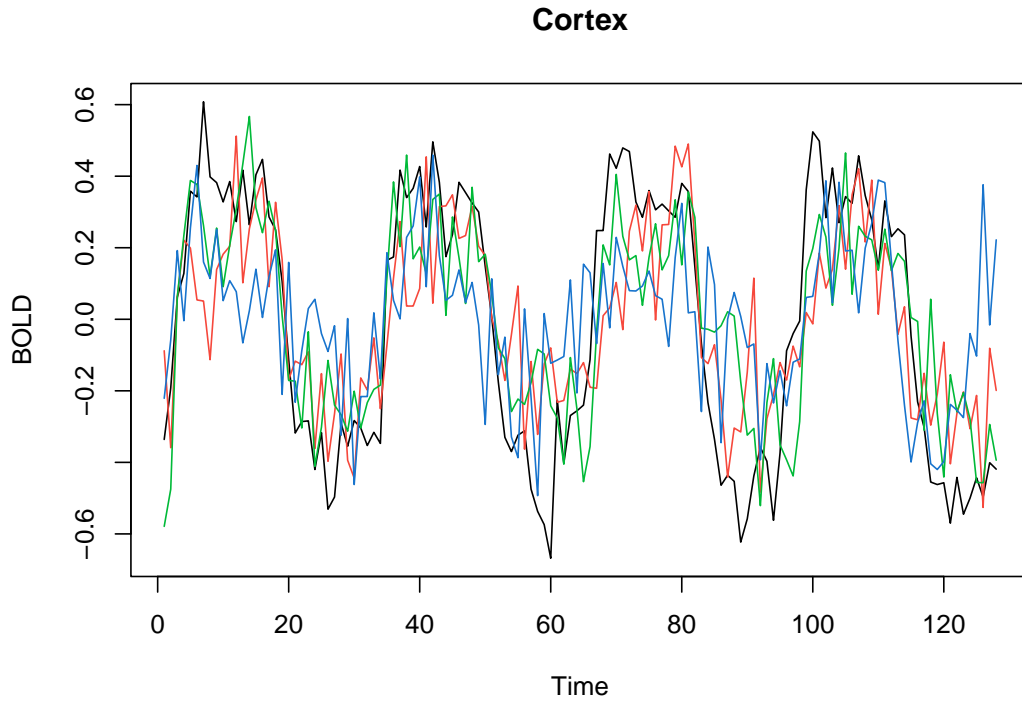


Figure 4: *Blood oxygenation-level dependent (BOLD) signal intensity in regions of the cortex (from SS).*

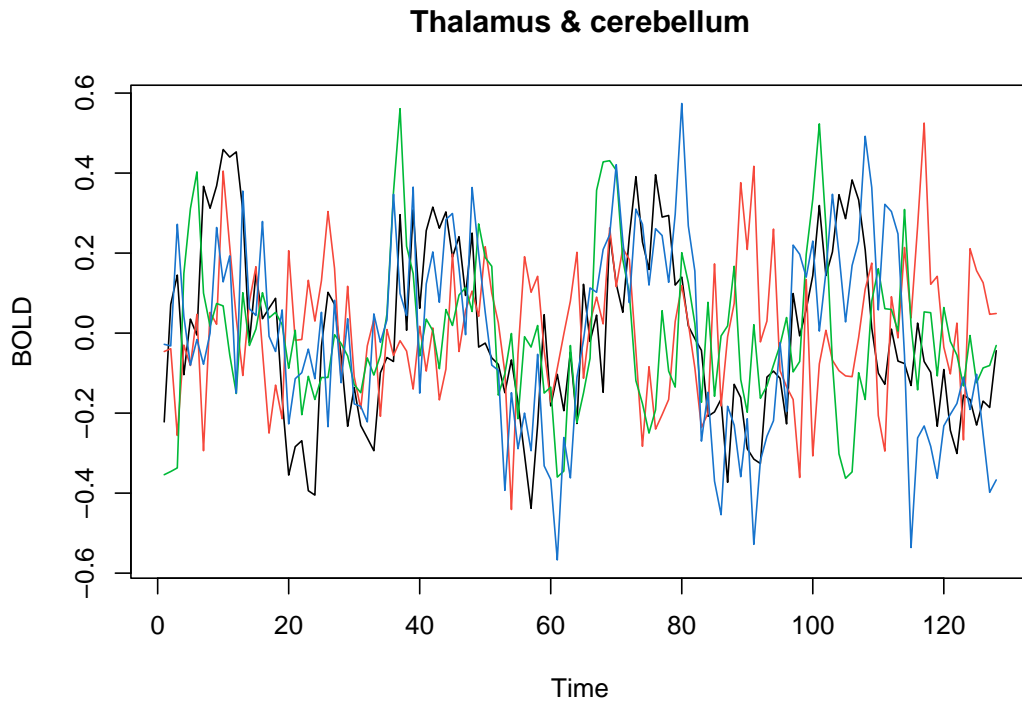


Figure 5: *BOLD signal intensity in regions of the thalamus and cerebellum (from SS).*

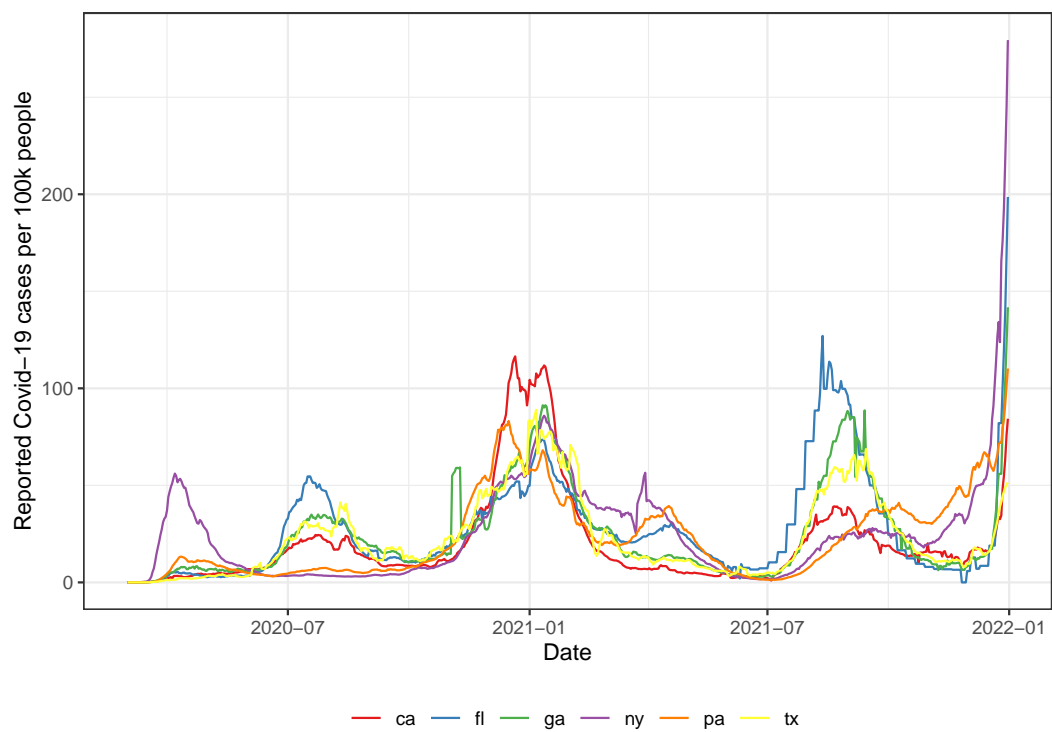


Figure 6: *Reported Covid-19 cases per 100k people in 6 large US states.*

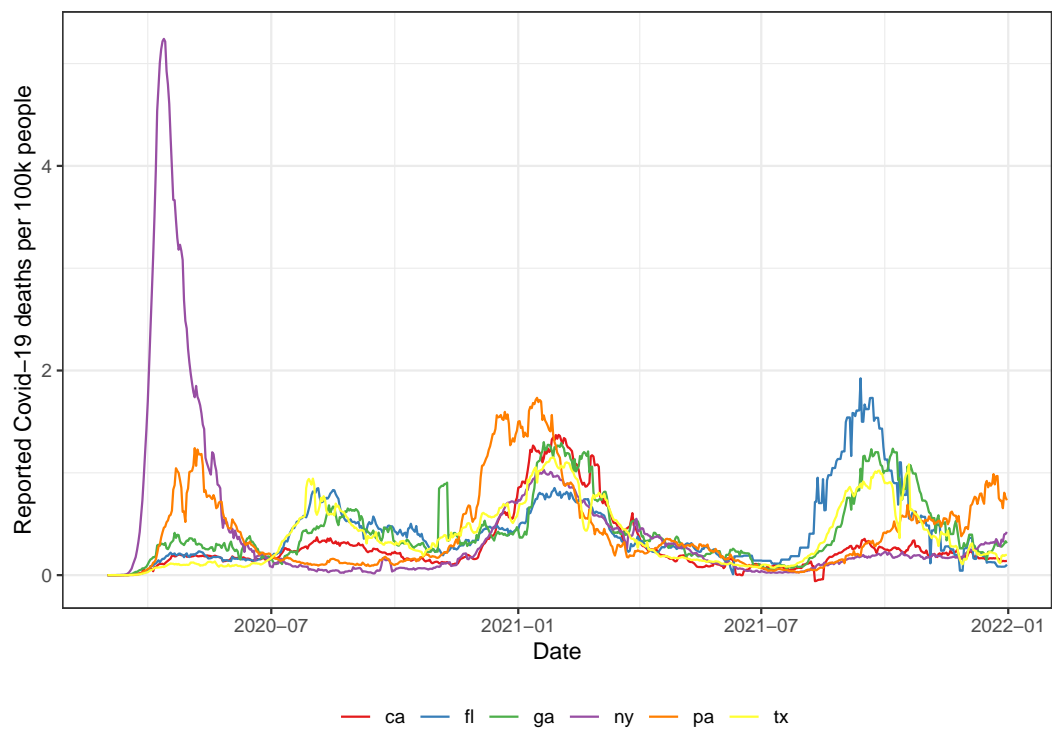


Figure 7: *Reported Covid-19 deaths per 100k people in 6 large US states.*

4 White noise

- The term *white noise* is used a lot in time series in related fields. It simply refers to a sequence x_t , $t = 1, 2, 3, \dots$ of *uncorrelated* random variables, with zero mean, and constant variance. Precisely,

$$\begin{aligned}\text{Cov}(x_s, x_t) &= 0, \quad \text{for all } s \neq t \\ \mathbb{E}(x_t) &= 0, \quad \text{Var}(x_t) = \sigma^2, \quad \text{for all } t\end{aligned}$$

- (Recall ... for random variables x, y , their covariance is

$$\text{Cov}(x, y) = \mathbb{E}[(x - \mathbb{E}[x])(y - \mathbb{E}[y])]$$

and $\text{Cov}(x, x) = \text{Var}(x)$. The correlation between x, y is

$$\text{Cor}(x, y) = \frac{\text{Cov}(x, y)}{\sqrt{\text{Var}(x)}\sqrt{\text{Var}(y)}}$$

Therefore zero correlation and zero covariance are equivalent properties)

- A stronger property than white noise is *i.i.d. white noise*, that is, a sequence of white noise whose elements are also i.i.d.
- Why is this stronger? First, the distributions of the elements in a white noise sequence do *not* need to be the same—they only need to have the same first two moments (mean and variance). Second, white noise requires only zero correlation, not independence
- (Can you give an example of uncorrelated but not independent random variables?)
- An even stronger property is *Gaussian white noise*, that is, a sequence of white noise whose elements are also jointly Gaussian distributed
- Why is this stronger than i.i.d. white noise? Because if two Gaussians have equal mean and variance, then they are the same distribution; and, for Gaussians, zero correlation implies independence
- To summarize,

$$\{\text{Gaussian white noise sequences}\} \subseteq \{\text{i.i.d. white noise sequences}\} \subseteq \{\text{white noise sequences}\}$$

- A Gaussian white noise sequence is plotted below, in Figure 8. Do any of the time series examples above look like white noise? No. White noise is not a great model for time series data, which typically has both trends (nonconstant mean and variance) and dependence (nonzero correlation). But it is an important concept and will serve as a building block for more complex models

5 Linear filtering

- Another important concept in time series is *filtering*. fields. A *linear filter* is just the result of performing a moving linear combination of a series x_t , $t = 1, 2, 3, \dots$, with given weights. (Nonlinear filters take nonlinear combinations and we won't talk about them)
- The simplest and most common type of linear filter is a moving average. For example, a *moving average*, that is centered around lag 0, of window length 3, is

$$y_t = \frac{1}{3}(x_{t-1} + x_t + x_{t+1})$$

In principle, we could center the moving average wherever we want. But the term moving average (without further specification) usually means that we center it at lag 0

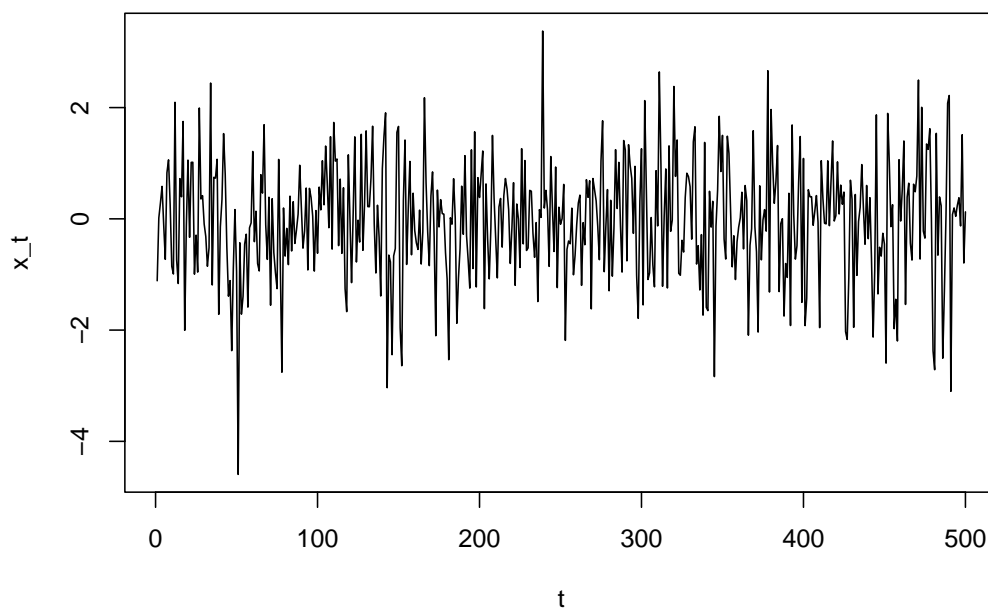


Figure 8: *Gaussian white noise.*

- When we center the moving average so that its right endpoint is at time t , ensuring we only average past values, this is called a *trailing average*. For example, a trailing average of length 3 is

$$y_t = \frac{1}{3}(x_{t-2} + x_{t-1} + x_t)$$

The Covid-19 data plotted above (Figures 6 and 7) was actually filtered with a 7-day trailing average)

- A general linear filter takes the form

$$y_t = \sum_{i=-\infty}^{\infty} a_i x_{t-i}$$

for constants a_i , where typically only finitely many are nonzero. For example, the second to last example took $a_{-1} = a_0 = a_1 = 1/3$, and the last example took $a_0 = a_1 = a_2 = 1/3$

- Linear filters provide a form of *smoothing* for time series, which we'll revisit briefly later in the lecture, and then in more detail in a future week

6 Autoregression

- An *autoregressive process* is one that takes the form

$$x_t = \sum_{i=1}^k \beta_i x_{t-i} + \epsilon_t$$

for coefficients β_1, \dots, β_k and errors ϵ_t

- Typically we assume that the errors are a white noise sequence

- The value of k is called the *order* of the autoregressive process, and the abbreviation $\text{AR}(k)$ is common. So, for example, $\text{AR}(3)$ means an autoregressive process with lag 3: each value in the sequence depends on the last 3 values
- The simplest autoregressive process is $\text{AR}(1)$, with coefficient $\beta_1 = 1$: this is

$$x_t = x_{t-1} + \epsilon_t$$

also known as a *random walk*

- Random walks may seem very simple and trivial at first but actually they and simple generalizations are pretty fascinating, and important
- For example, did you know that a random walk in 1 and 2 dimensions is *recurrent* (returns to where it started—say, the origin—infinately often with probability 1), but in 3 dimensions and higher it is *transient* (returns to the origin infinitely often with probability 0)
- (And did you know that Larry Brown proved in 1971¹ that this last fact is *equivalent* in some precise sense to Stein’s paradox: that the MLE in a normal means model is admissible in dimensions 1 and 2, and inadmissible in dimensions 3 and higher??)
- You could also say that random walks were the beginning of what made Google the giant they are today (the “billion dollar eigenvector”)
- Ok, back to the main story, a *random walk with drift* takes the form

$$x_t = \delta + x_{t-1} + \epsilon_t$$

for some $\delta > 0$. Figure 9 plots examples of random walks with and without drift

- By unraveling the last iteration, we can write a random walk with drift equivalently as (assuming we start at $x_0 = 0$):

$$x_t = \delta t + \sum_{i=1}^t \epsilon_i$$

Think: what happens to the variance of this as t grows?

7 Signal plus noise

- A useful general time series model is called the *signal plus noise model*, of the form

$$x_t = \theta_t + \epsilon_t$$

where the errors ϵ_t , $t = 1, 2, 3, \dots$ may be white noise or may be correlated over time

- The problem of estimating the signal θ_t , $t = 1, 2, 3, \dots$ is of great interest in many applications
- It is common in time series to think about *decompositions* for the signal sequence, into a *trend* u_t and *seasonal* components s_t :

$$\theta_t = u_t + s_t$$

- The seasonal component s_t has a regular/periodic behavior for some fixed period. For example:
 - Pediatric doctor’s office visits dip on weekends (weekly period)
 - Gambling goes up at the beginning of each month (monthly period)
 - Chocolate purchases go up on and around Valentine’s day (yearly period)

¹Larry Brown (1971), “Admissible Estimators, Recurrent Diffusions, and Insoluble Boundary Value Problems”

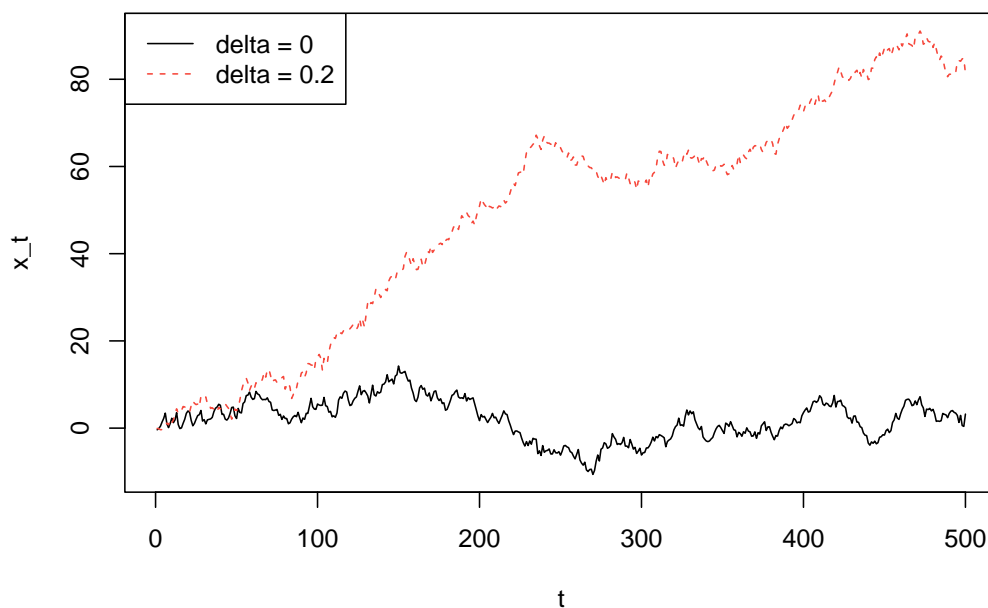


Figure 9: *Random walk without and with drift.*

- The trend component u_t is not regular, and is typically not assumed to be linear or to have any particular parametric form; it is typically estimated *nonparametrically* using some kind of smoother—more on this later in the course
- (Some authors even further decompose the trend into two components: *proper trend* and *cycle*. The former is monotone and the latter has a cyclic behavior but without a fixed period. We don't generally find this a useful distinction and won't really pursue this ... but it may be good to know about in case you hear people, particularly economists, mentioning: trend, seasonal, and cyclic components separately)
- Economists and official statistics agencies (like the US Census Bureau) care a lot about decompositions into trend and seasonal components ... there are various methods for doing so that we may cover later in the course: what is considered the “classical” decomposition, but also X-11 (developed by the US Census Bureau and Statistics Canada), SEATS (developed by the Bank of Spain), and STL (developed by academics at the University of Michigan and Bell Labs)
- Many consider STL to be the most general and robust method for decomposition. Figure 10 gives an example applied to US retail employment data

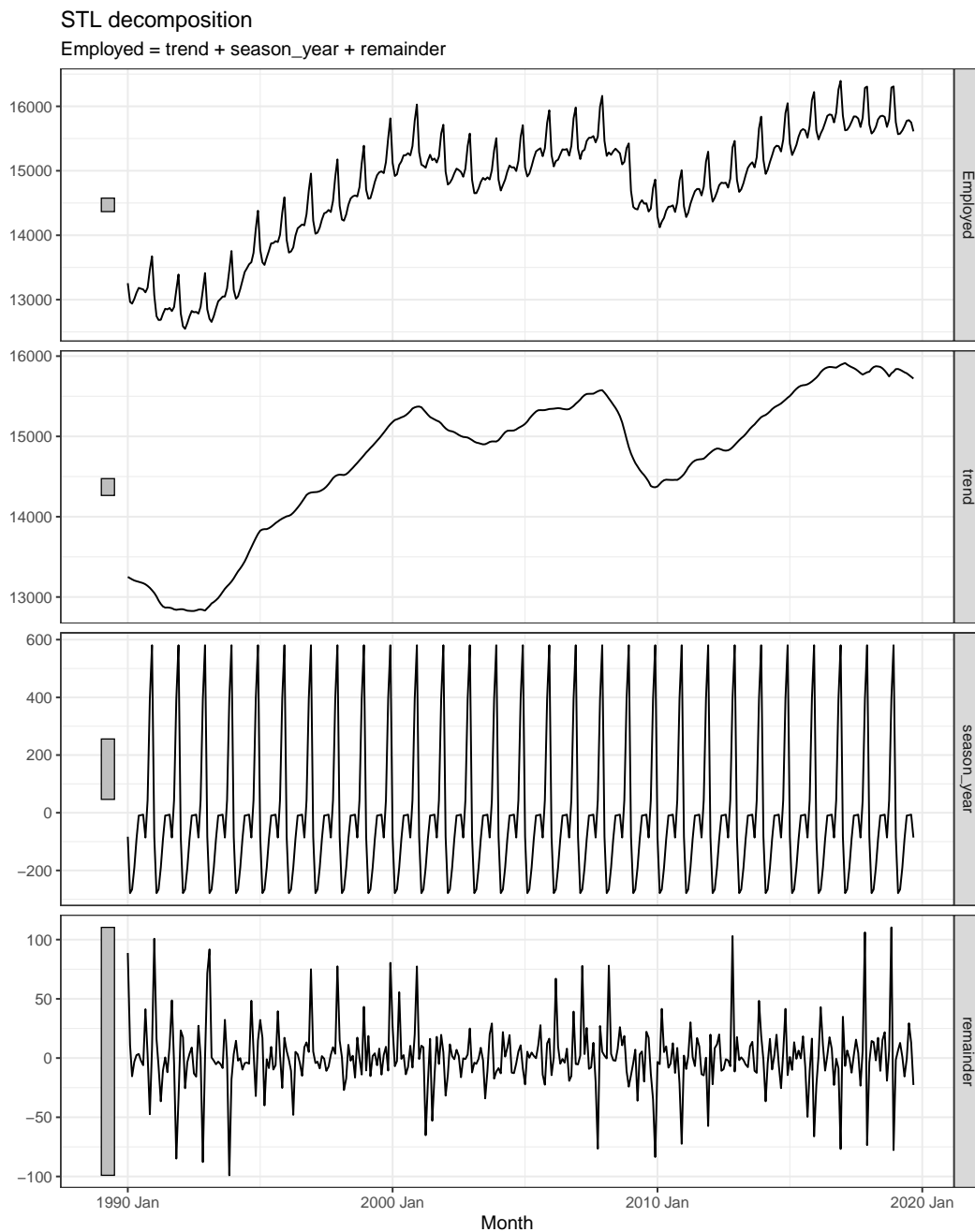


Figure 10: *STL decomposition of US retail employment data (from HA).*