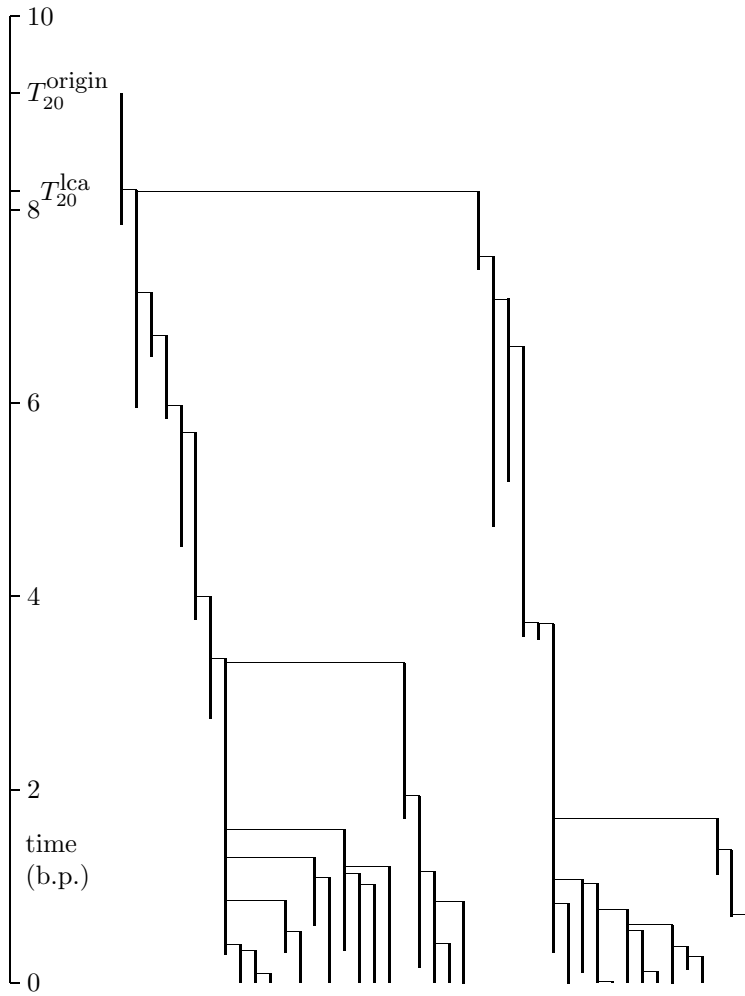
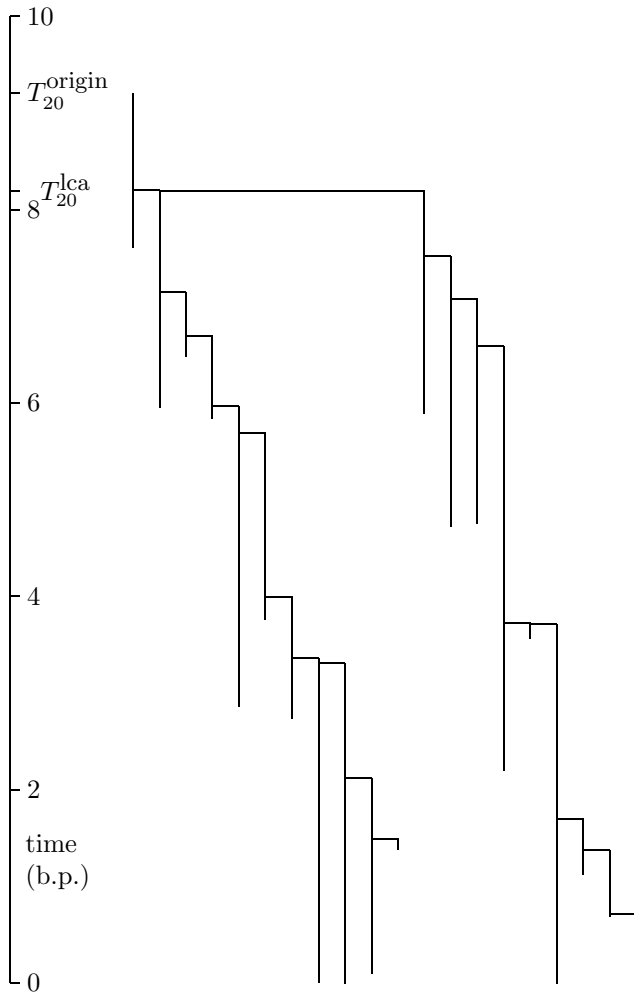


Realization 1. A complete clade on 20 extant species.

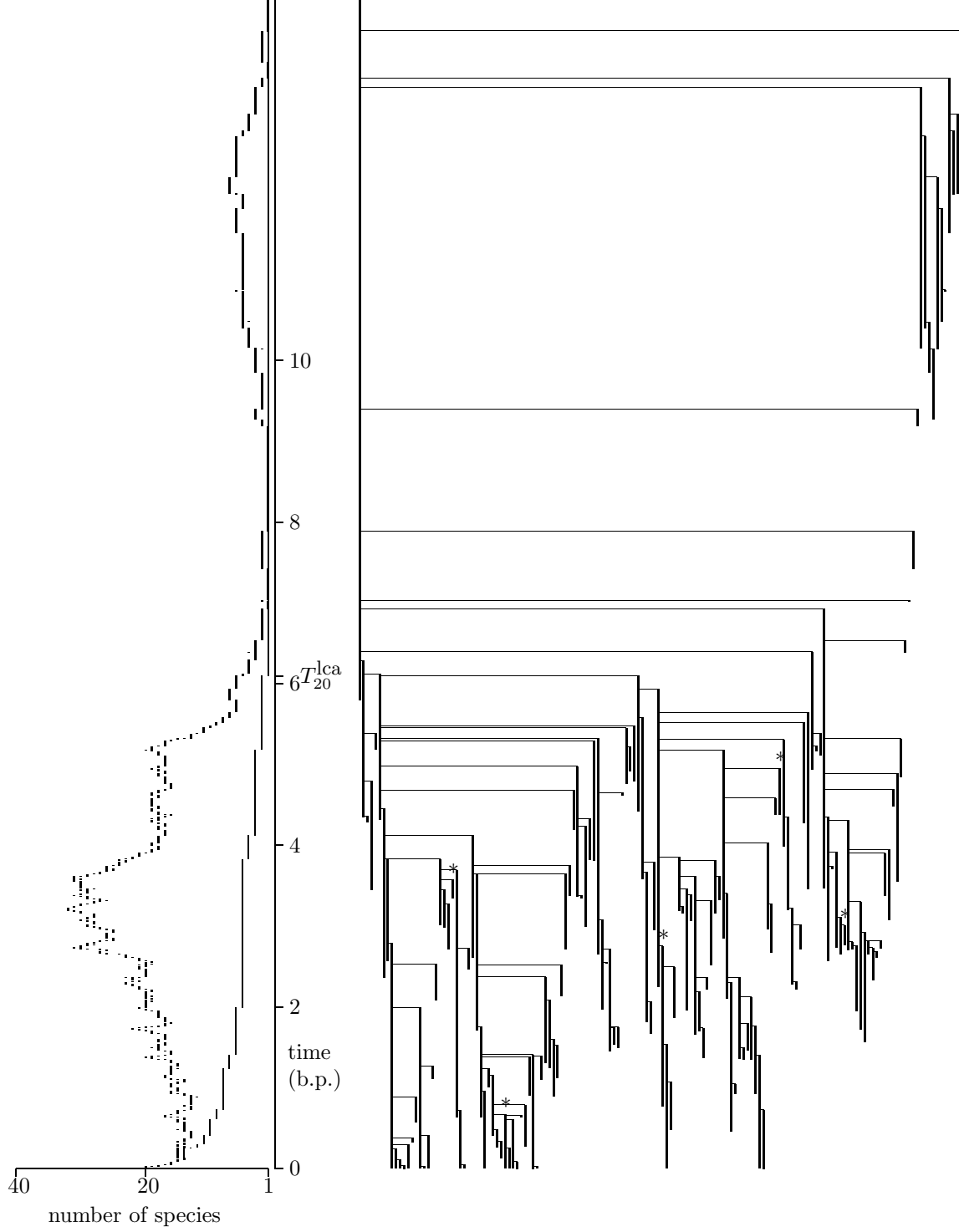
total number of species = 83
 max number of species at one time = 27.



Realization 1. Extant species and their ancestors.

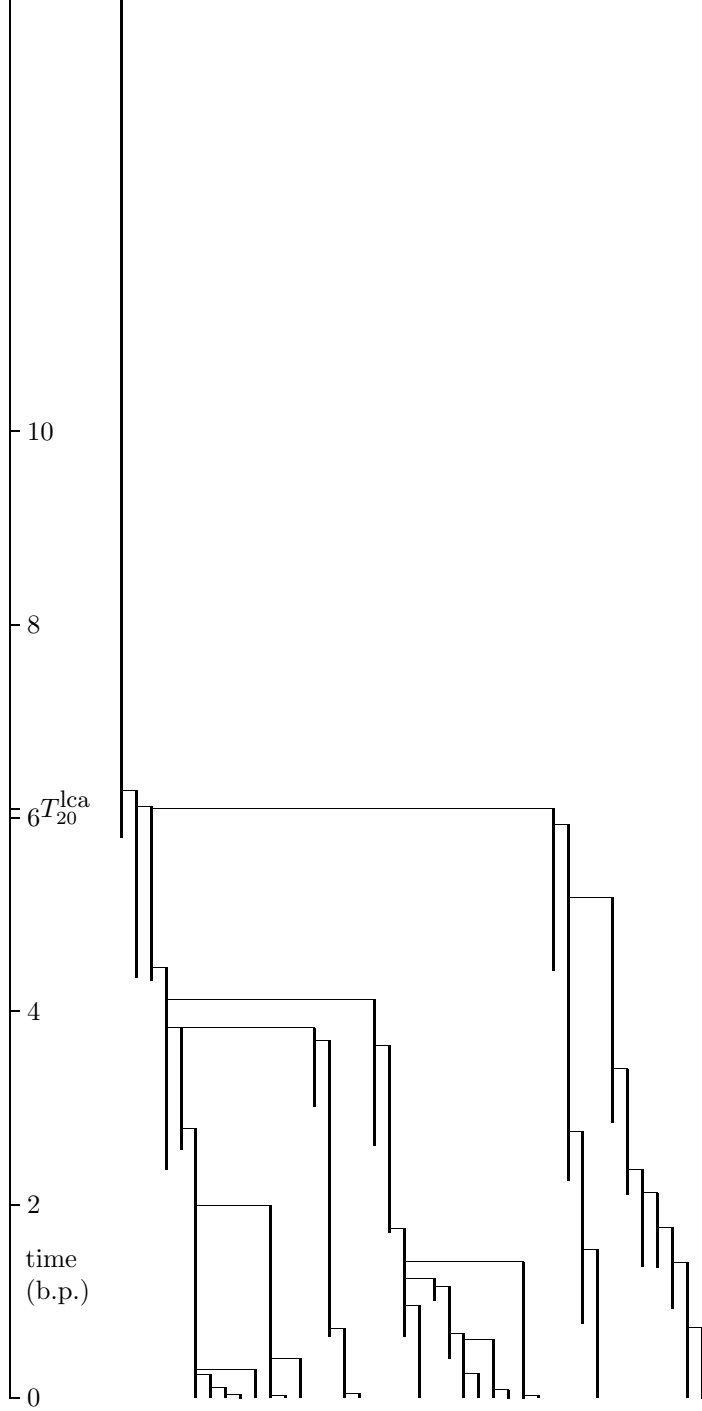


Realization 1. The tree on fine genera.

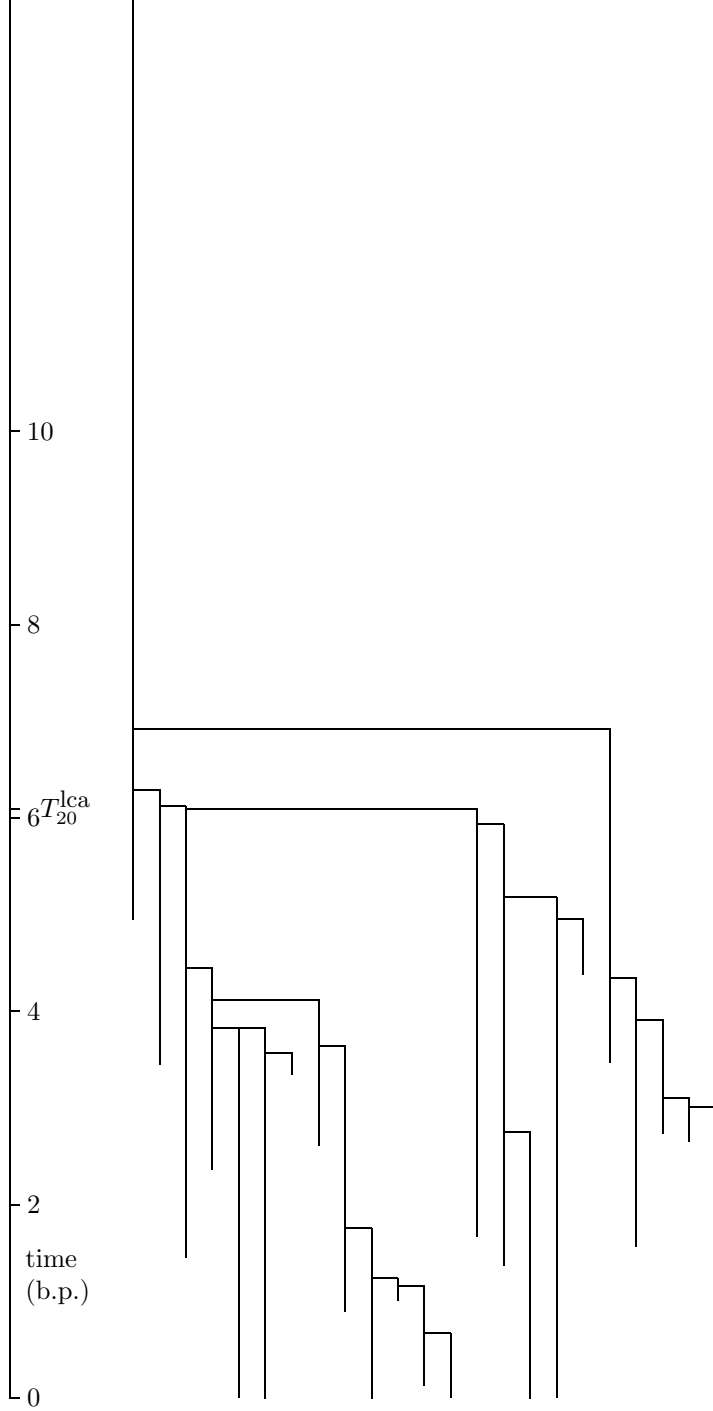


Realization 2. A complete clade on 20 extant species.

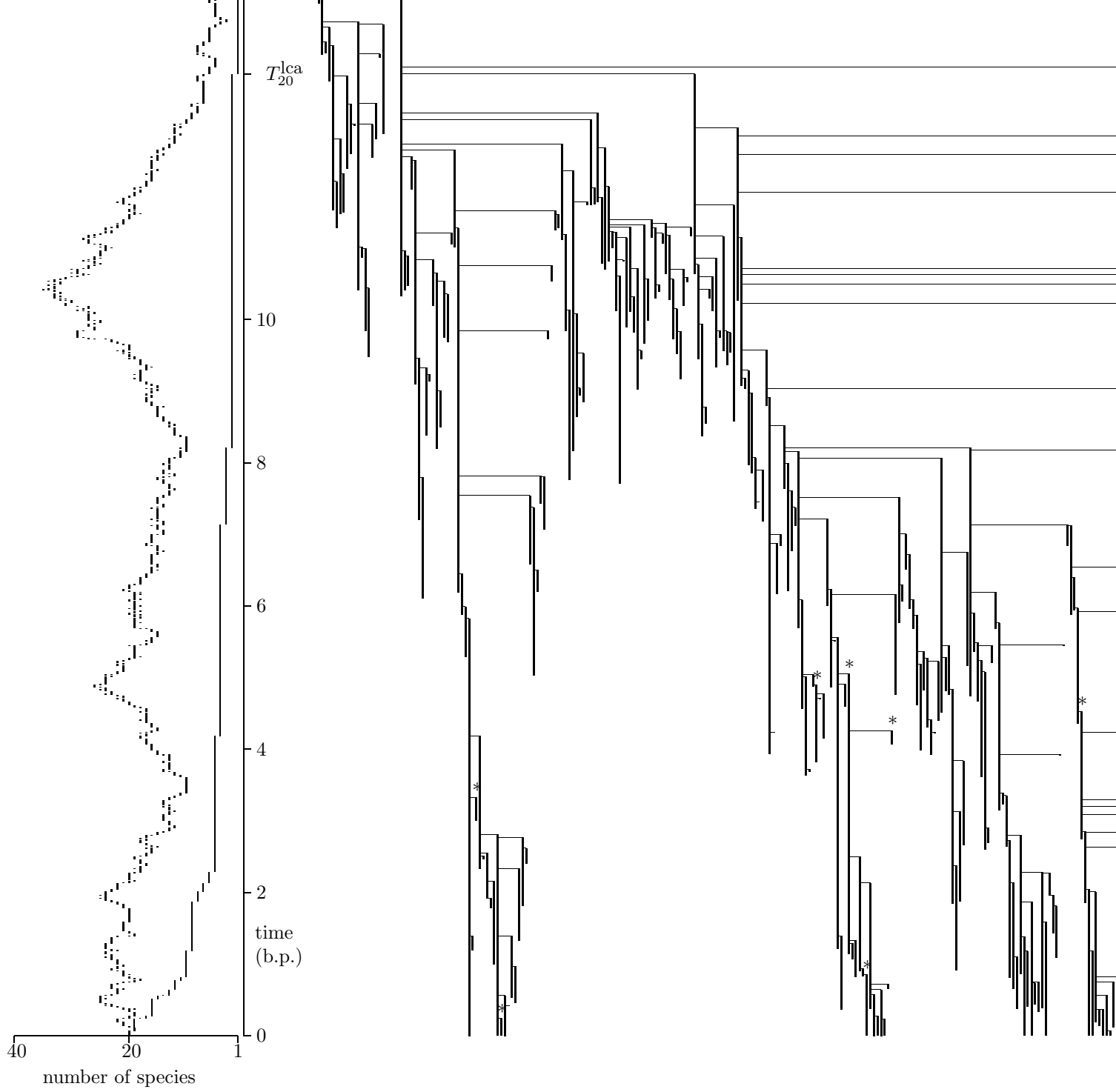
total number of species = 152
 max number of species at one time = 32.



Realization 2. Extant species and their ancestors.

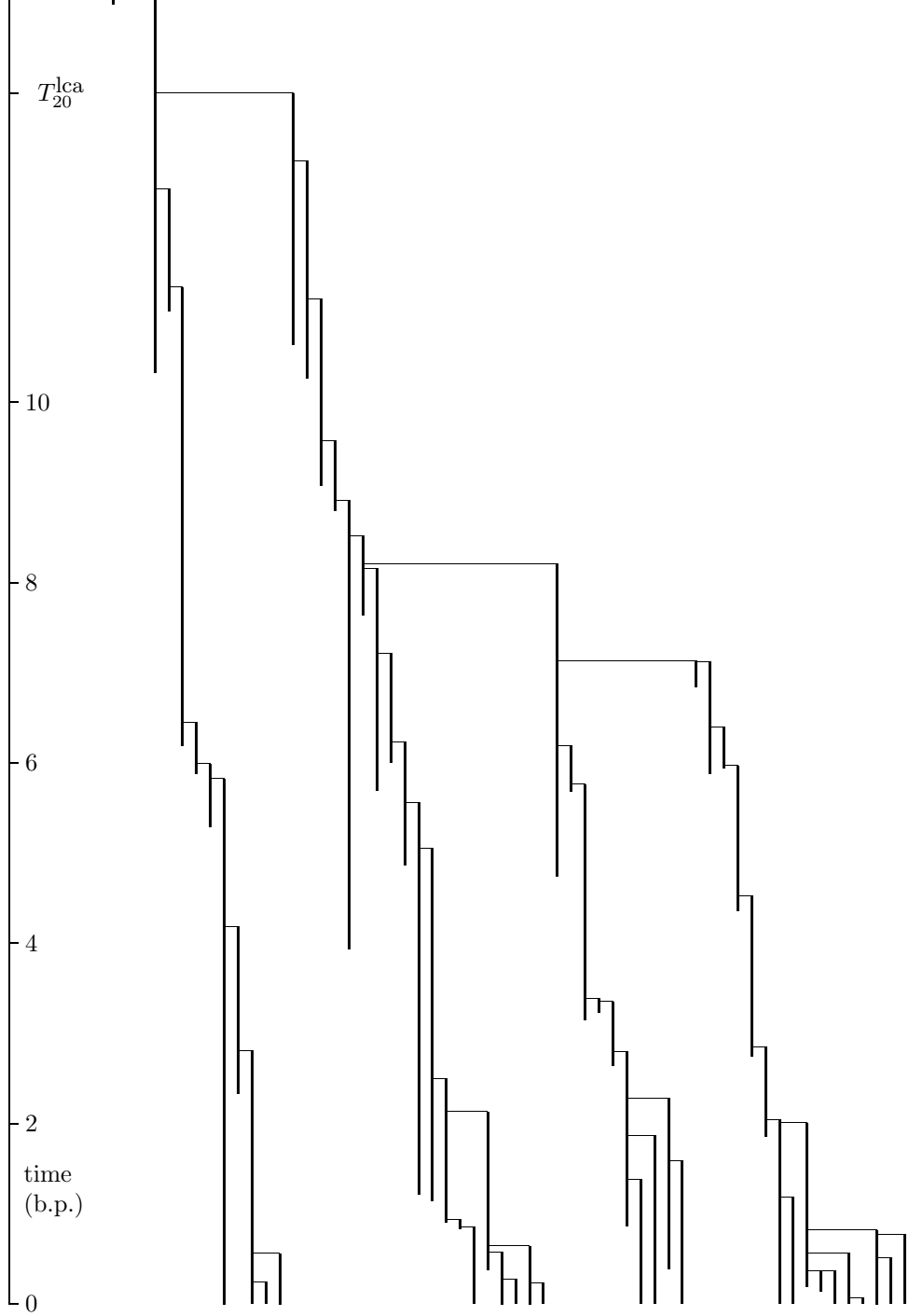


Realization 2. The tree on fine genera.

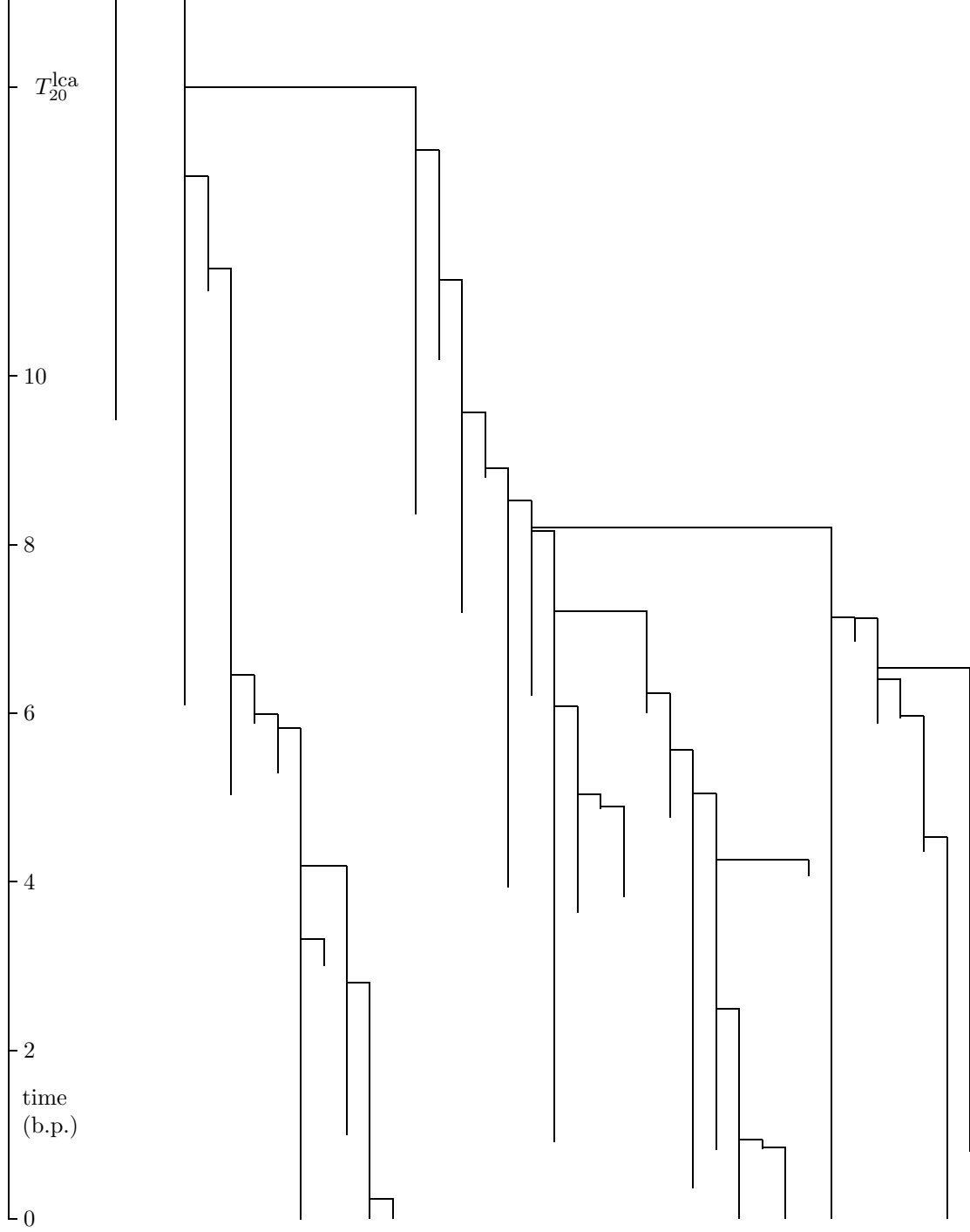


Realization 3. A complete clade on 20 extant species.

total number of species = 258
max number of species at one time = 35.



Realization 3. Extant species and their ancestors.



Realization 3. The tree on fine genera.